

COMMUNITY FACTS

SUTTON, NEBRASKA

www.cityofsutton.org

NOVEMBER 2008

POPULATION (Official U.S. Census)

	<u>2000</u>	<u>2007 Est.</u>
Sutton	1,447	1,326
Clay County	7,039	6,330
Labor Market*	137,532	137,986

*Includes Clay County and contiguous counties

Economic Development Department
Nebraska Public Power District
Columbus, Nebraska 68601
www.nppd.com
sites.nppd.com

©Nebraska Public Power District, 2008

INTRODUCTION

The following pages contain basic information about Sutton, Nebraska. This material was compiled by the city of Sutton, The Sutton Area Chamber of Commerce, the Sutton Development Corporation, and Nebraska Public Power District in order to promote community development.

Additional and more detailed information about Sutton may be obtained by contacting any of the following:

Virgil Ulmer, City Administrator
City of Sutton
Sutton, Nebraska 68979
Business Phone: (402) 773-4225
Fax: (402) 773-5501
Cell Phone: (402) 469-3163
Email: cityadmsutton@mainstaycomm.net
www.cityofsutton.org

Max Bergen, President
Sutton Development Corporation
Sutton, Nebraska 68979
Business Phone: (402) 773-5513
Home Phone: (402) 773-4347
Email: mb42326@navix.net

Amy Skalka, Representative
Sutton Area Chamber of Commerce
Sutton, Nebraska 68979
Business Phone: (402) 773-4233
Fax: (402) 773-5501
Email: schamber@mainstaycomm.net

Dennis G. Hall, CEcD
Economic Development Manager
Nebraska Public Power District
Columbus, Nebraska 68602-0499
Business Phone: (402) 563-5534
Toll Free: (800) 282-6773
Fax: (402) 563-5090
Cellular Phone: (402) 562-0893
Email: dghall@nppd.com
sites.nppd.com

Section headings are hot linked within this Facts Book. Click on the blue text links to jump to a new section. Clicking on the blue section headings will return you to the Table of Contents.

Table of Contents

GENERAL INFORMATION

LOCATION	1
POPULATION	1
LOCAL ECONOMY	2
ELEVATION	2
TOPOGRAPHY	2
HISTORY	2

ECONOMIC DEVELOPMENT

MANUFACTURERS	5
MAJOR NONMANUFACTURING EMPLOYERS	5
OTHER MAJOR AREA EMPLOYERS	6
ECONOMIC DEVELOPMENT ORGANIZATIONS	8

LABOR

LABOR SUPPLY	9
UNIONIZATION	11
WAGES	11
FRINGE BENEFITS	12

TRANSPORTATION

RAILROADS	13
MOTOR	13
AIR	13
WATER	13

UTILITIES

ELECTRICITY	15
NATURAL GAS.....	17
OTHER FUELS.....	17
WATER	17
SEWERAGE	17
SOLID WASTE DISPOSAL	18
RECYCLING	18

COMMUNICATIONS

TELECOMMUNICATIONS.....	19
INTERNET.....	19
POST OFFICE.....	19
PACKAGE DELIVERY SERVICES.....	19
NEWSPAPER.....	19
RADIO	19
TELEVISION.....	19

TAX STRUCTURE

VALUES FOR TAX LEVY PURPOSES—CITY OF SUTTON	21
TAX RATE	21
CITY SALES TAX.....	21
LOCAL BONDED INDEBTEDNESS	21
CITY BOND ISSUES	22

LOCAL GOVERNMENT

COUNTY GOVERNMENT23
MUNICIPAL GOVERNMENT23
FIRE PROTECTION23
LAW ENFORCEMENT.....23
STREETS.....23
BUILDING AND ZONING REGULATIONS24
PLANNING24

COMMUNITY FACILITIES

SCHOOLS AND COLLEGES25
CHURCHES31
HEALTH CARE31
NURSING HOMES31
LIBRARY31
RECREATION.....31
HOUSING.....32
FINANCIAL33

COMMUNITY SERVICES

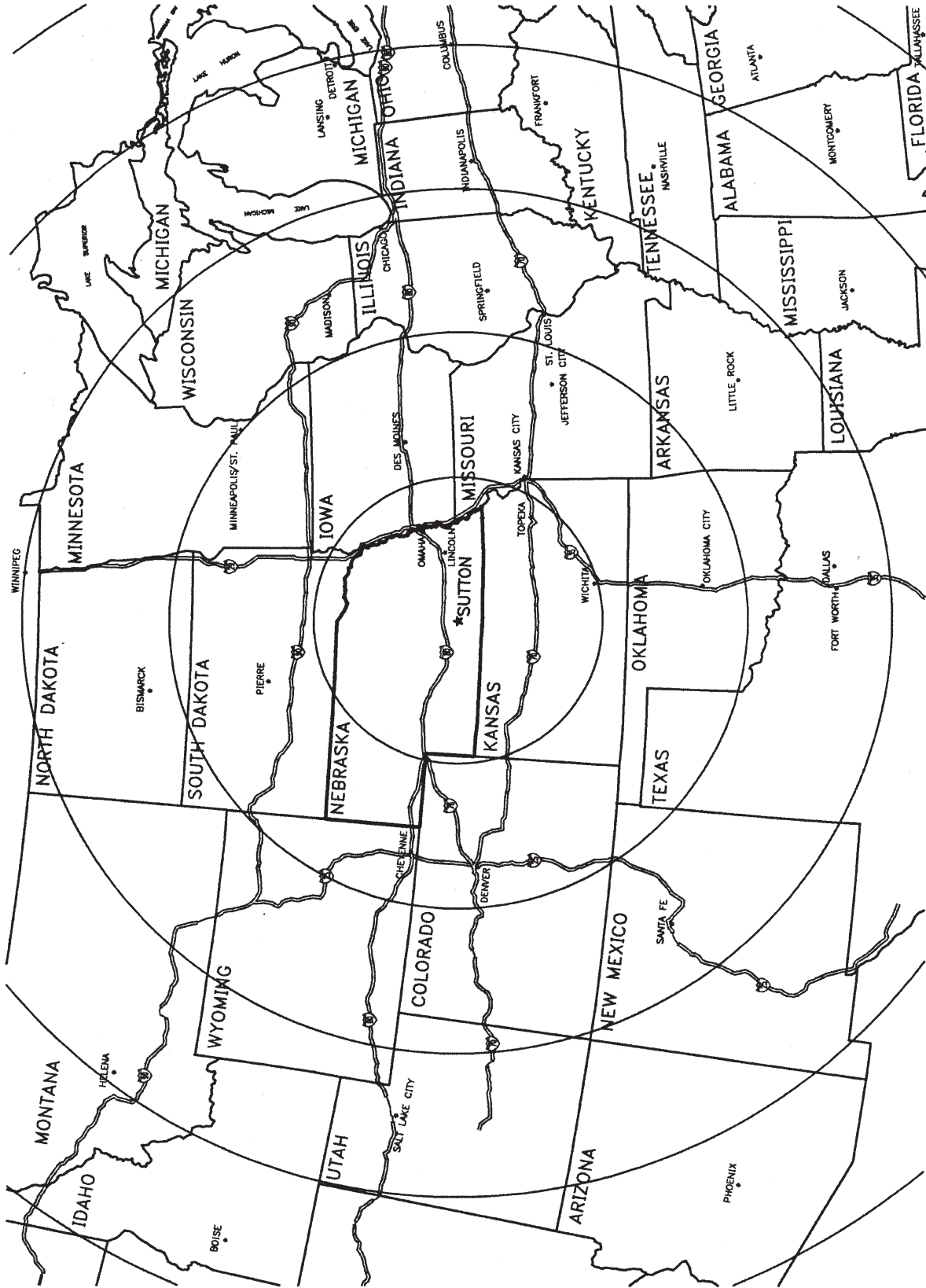
PROFESSIONAL.....35
BUSINESS AND COMMERCIAL35

AGRICULTURE & RAW MATERIALS

AGRICULTURE.....37
RAW MATERIALS37
ROMAN L. HRUSKA U.S. MEAT ANIMAL RESEARCH CENTER38

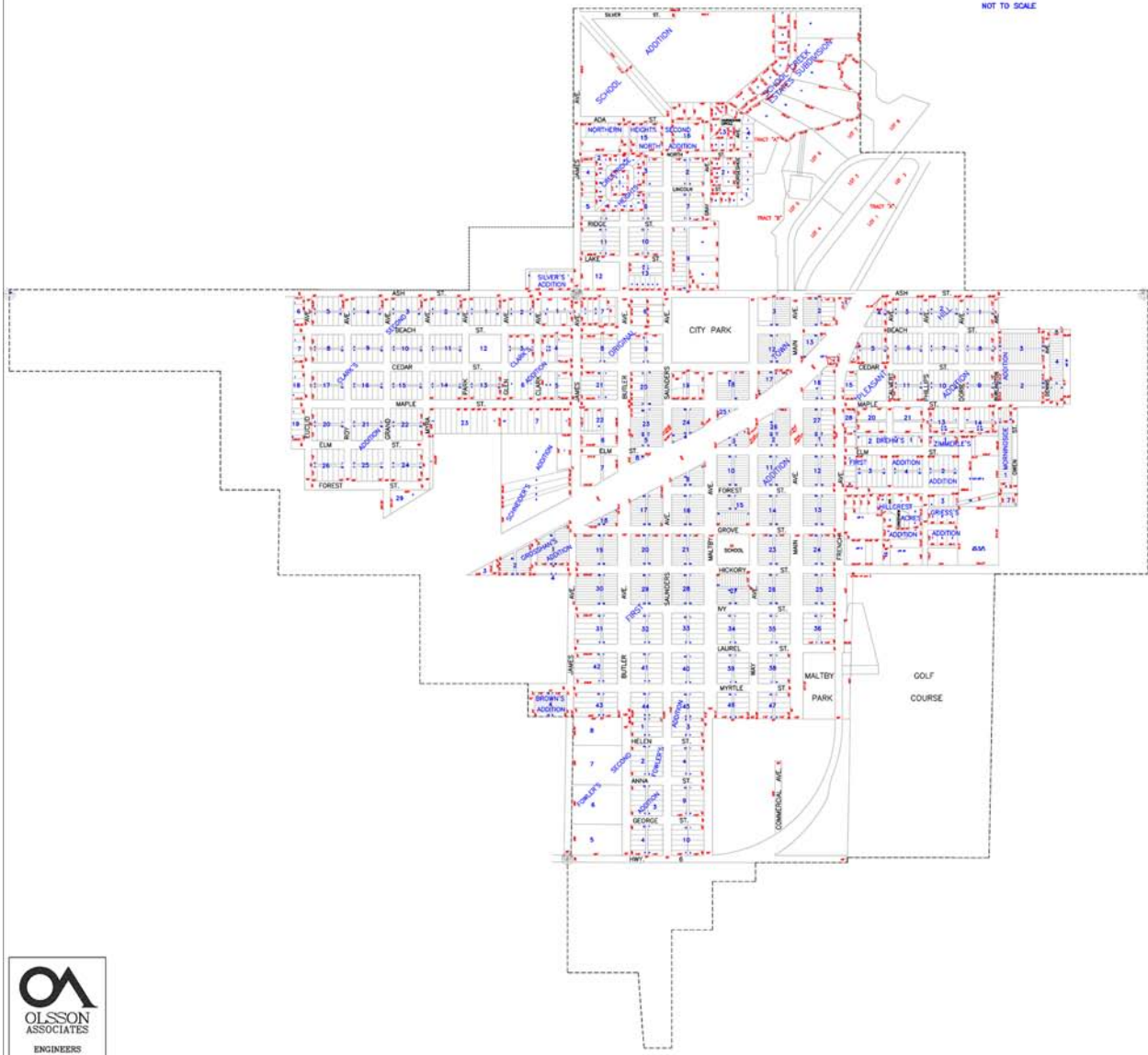
CLIMATE

TEMPERATURE, PRECIPITATION, AND HUMIDITY39
FROST DATA.....39



SCALE: EACH CIRCLE REPRESENTS APPROXIMATELY 200 MILES

CITY OF SUTTON PLAT MAP SUTTON, NEBRASKA 2005




**OLSSON
ASSOCIATES**
ENGINEERS
201 East 2nd Street
P.O. Box 1072
Grand Island, NE 68801
308-384-8750

GENERAL INFORMATION

LOCATION

Sutton is located in Clay County in south-central Nebraska and is served by U.S. Highway 6. Sutton is 18 miles south of Interstate 80, 54 miles southeast of Grand Island, 79 miles southwest of Lincoln, and 132 miles southwest of Omaha.

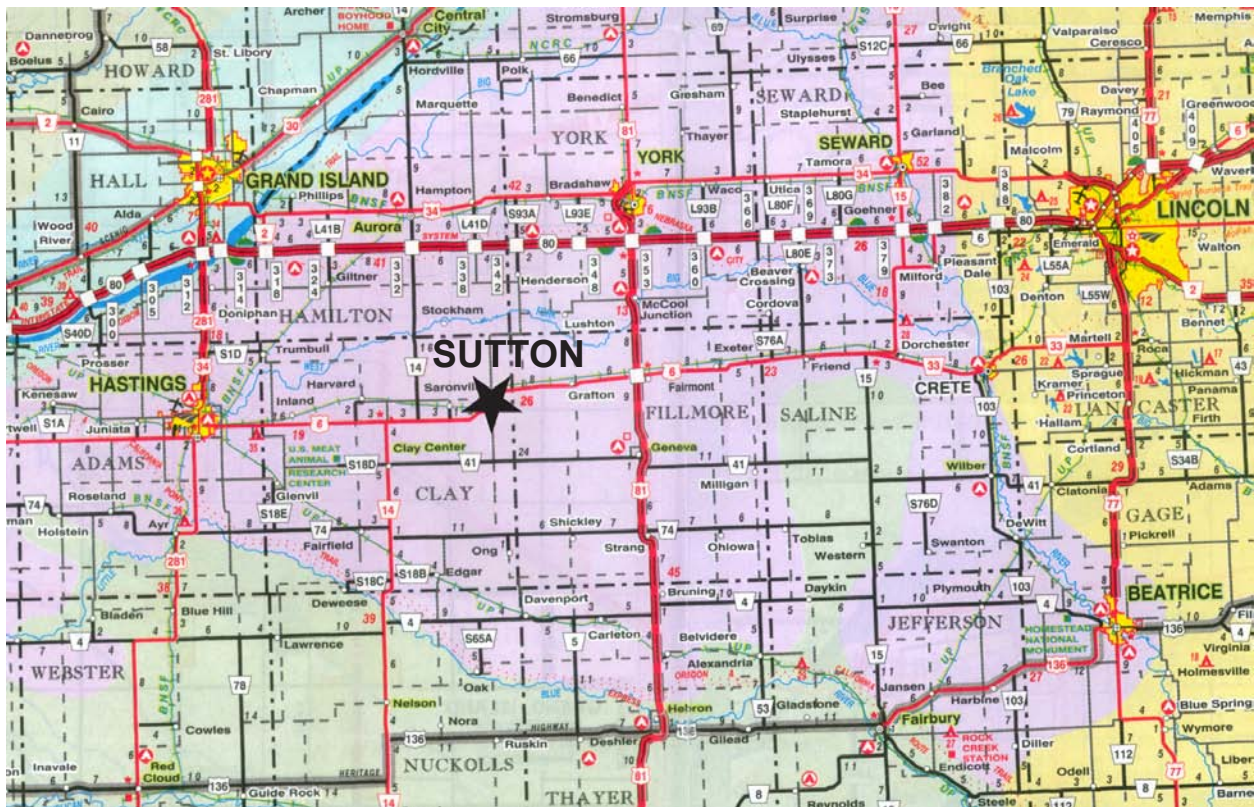
POPULATION (U.S. Census)

Year	Sutton	Clay County
1970	1,361	8,266
1980	1,416	8,106
1990	1,351	7,123
2000	1,447	7,039
2007 (Est.)	1,326	6,330

Clay County Population by Race and Hispanic Origin, 2006 U.S. Census

White	98.4%
Black	0.4%
American Indian and Alaska Native	0.5%
Asian	0.3%
Native Hawaiian and Other Pacific Islander	0.0%
Two or More Races	0.3%
Hispanic or Latino Origin	4.4%
White Persons Not Hispanic	94.3%

The 2007 U.S. Census estimates 137,986 people live in Clay County and the contiguous counties of Adams, Fillmore, Hall, Hamilton, Nuckolls, Thayer, Webster, and York.



LOCAL ECONOMY

Basic economic activities of Sutton include farming, ranching, cattle feeding, retailing, manufacturing, and tourism. The economy has been influenced during the last ten years by the addition of some light manufacturing.

Firms in the community with retail sales tax permits reported 2007 net taxable retail sales of \$12,208,525, while Clay County reported retail sales of \$28,284,293. Three wholesale firms in Sutton distribute groceries, lumber, and auto parts.

ELEVATION

Sutton is 1,720 feet above sea level.

TOPOGRAPHY

The terrain surrounding Sutton is level to gently sloping. The silty soils have a claypan subsoil and deep silty soils on loess uplands.

HISTORY

The town of Sutton began on March 14, 1870, when Luther French staked out his claim and built a dugout on the east side of School Creek. Settlers poured into the county in 1871 when it became known that the Burlington and Missouri River Railroad was coming through this part of the country.

In June 1871, John R. Maltby and Roy F. Way came into the area from Crete and decided this would be a good place for a town. Luther French laid out his claim as a town on August 12, 1871. The town was named Sutton after Maltby's home town in Massachusetts. The first rail was laid into Sutton on the same day. The first train made a

regular run on August 18, 1871. With the news of the coming of the railroad, the town began to grow from a wild prairie tract into a pretentious county seat.

The first post office was established in June 1871 with Luther French as postmaster. Early 1872 a permanent postmaster was appointed.

A colony from Southern Russia, near the port of Odessa, came to Sutton and settled in the town and adjacent county in 1873. By that time Sutton had grown to a village with 41 businesses, including 2 newspapers and 2 hotels.

In the early days, Sutton, the county seat of Clay County, was a lively place with all the features of a frontier town. In 1879 the county seat was moved to Clay Center, which at that time was only a paper town. The railroad was using strong influence to have the county seat moved from Sutton since it had been decided that the county seat should be near the center of the county.

It is said no less than 20 newspapers published news, at least briefly, in Sutton from 1871–1885.

On October 15, 1874, Sutton was incorporated as a village with F. M. Brown as the first mayor. Sutton was incorporated as a second class city in 1876 and I. N. Clark became the mayor.

Sutton remains the largest community in the county taking a leadership role in many areas of development, church, school, and business.

A major downtown improvement project was completed in the late 1980s–early 1990s. A three-year plan to renovate the century-old business district was completed without state or federal funding.



Welcome to Sutton & Sutton Civil War Memorial



Saunders Avenue Looking North



South End of Business District



West Side of Business District



Central Nebraska
Wood Preservers



CPI



George Bros. Propane



Friesen Chevrolet

ECONOMIC DEVELOPMENT

MANUFACTURERS

<u>Company/Year Established</u>	<u>Product</u>	<u>Market</u>	<u>Employees</u>		
			<u>Male</u>	<u>Female</u>	<u>Union</u>
Central Nebraska Wood Preservers 1987	Treated lumber	National	18	1	None
Fuehrer's Market 1946	Cheese spread	Regional	2	1	None
Genie B's Specialties 1995	Custom sewing, sheets, comforters, pillows	National	5	20 4*	None
Midwest Truss 2004	Trusses	National	3	1	None
Remco 1988	Pallets	Regional	16	0	None
Rolfes Seed Company 1982	Home roasted sunflower seeds	National	0	4	None

*Part-time and/or seasonal

MAJOR NONMANUFACTURING EMPLOYERS (employing 10 or more)

<u>Employer</u>	<u>Type of Activity</u>	<u>Employees</u>		
		<u>Male</u>	<u>Female</u>	<u>Union</u>
City of Sutton	Government	9	2 1*	None
CPI	Grain, feed & fertilizer	24	2	None
Friesen Chevrolet	Auto sales & service	16	7	None
George Bros. Propane	Grain, feed & fertilizer	35	5	None
Sutton Community Home	Nursing home	1	71	None
Sutton Public Schools	Education	25	40	NSEA
Van Kirk Bros. Construction	Heavy construction	53	2	None

*Part-time and/or seasonal

OTHER MAJOR AREA EMPLOYERS (within 100 miles and employing 50 or more)

<u>Employer</u>	<u>Type of Activity</u>	<u>Employees</u>	<u>Union</u>
Clay Center, 15 miles			
Roman L. Hruska U.S. Meat Animal Research Center	Livestock research	240	None
Hampton, 20 miles			
United Co-Op	Fertilizer, petroleum, grain handling & storage, livestock feed	350	None
Aurora, 28 miles			
Aurora Cooperative (Headquarters)	Feed pellets and fertilizer	350	None
Aurora Memorial Hospital	Medical	275	None
BonnaVilla Homes Division	Manufactured housing	200	None
The Iams Company	Pet food	220	None
District 4-R Schools	Education	229	NSEA
Hamilton Manor	Nursing home	121	None
Hastings, 29 miles			
Ag Processing	Soybean meal & oil	144	None
Armour Eckrich, Inc.	Processed beef & pork, portion controlled & frozen cooked foods	550	None
Central Community College	Education	166	None
City of Hastings	Government	200	None
Dutton-Lainson Company	Boat trailer accessories, couplers, fuel filters, electric winches, fence stretchers, agriculture & industrial jacks	300	None
Eaton Corporation	Automotive valves & forged gears	115	None

<u>Employer</u>	<u>Type of Activity</u>	<u>Employees</u>	<u>Union</u>
FlowServe	Irrigation well vertical turbine pumps	150	None
Good Samaritan Village	Health care	376	None
Great Plains Packaging	Corrugated paperboard shipping containers & displays	158	None
Hastings College	Education	270	None
Hastings Public Schools	Education	469	NSEA
Hastings Regional Center	Health care	129	None
Mary Lanning Memorial Hospital	Medical	800	None
P. W. Eagle	PVC, polyethylene piping & tubing	115	None
Sara Lee Baking Group	Breads	167	None
T & L Irrigation	Center pivot & linear move irrigation systems	240	None
Thermo King	Transport refrigeration units	294	None
York, 31 miles			
Champion Home Builders	Manufactured homes	253	None
Cornerstone Bank	Financial services	149	None
Epworth Village	Residential youth treatment	125	None
Hamilton-Sundstrand	Aerospace components & systems	200	None
Kroy Building Products	Aluminum tubing & fittings	128	None
Nebraska Center for Women	Correctional facility	139	NAPE
Nebraska Public Power District	Electric utility	131	None
Petro Travel Plaza	Convenience store/truck stop	148	None

<u>Employer</u>	<u>Type of Activity</u>	<u>Employees</u>	<u>Union</u>
State of Nebraska	Government	162	None
Wal-Mart Superstore	Retail	320	None
York County	Government	108	NAPE
York General Health Care Services	Medical	430	None
York Public Schools	Education	237	NSEA

ECONOMIC DEVELOPMENT ORGANIZATIONS

The Sutton Development Corporation, the Sutton Area Chamber of Commerce, the Sutton Community Redevelopment Authority, the Sutton Community Foundation, and the city of Sutton combine efforts in industrial development activities.

The Sutton Area Chamber of Commerce is an action agency designed to meet community needs. It is a voluntary organization of individuals and businesses who work together to advance the commercial, financial, industrial, and civic interests of a community.

The Sutton Community Redevelopment Authority, a political subdivision of the city of Sutton, has the ability to move forward with development projects within the community. The Authority has the ability to use many different tools including

Tax Increment Financing (TIF) to provide suitable areas for economic development.

The Sutton Development Corporation is a profit corporation comprised of 249 stockholders. It has an authorized capitalization of \$25,000 with capital stock paid in totaling \$53,000. Principal assets include a savings account and medical clinic.

The Sutton Community Foundation is a nonprofit organization that was established to promote civic programs for the betterment of the city of Sutton and the surrounding area. The foundation will provide the organizational structure for collection, maintenance, and distribution of charitable donations from local citizens and friends of the Sutton community.

Approximately 95 acres of land in and adjacent to Sutton are zoned for industry. The price of industrially zoned land ranges from \$1,000 to \$2,000 per acre.



Speculative Building

LABOR

LABOR SUPPLY

A. Employment in the Sutton labor market, which is defined as the whole of Clay County and the total labor market consisting of Clay County and the contiguous counties of Adams, Fillmore, Hall, Hamilton, Nuckolls, Thayer, Webster, and York. Twelve-month average (Oct 2007 through September 2008).

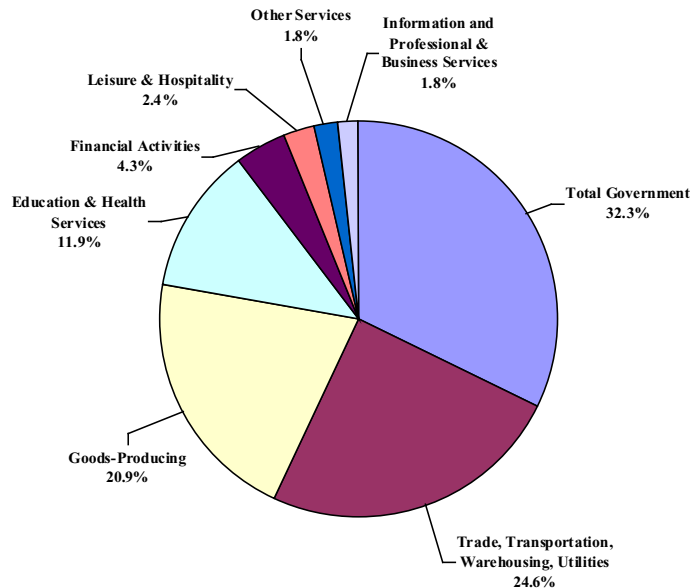
<u>Nonfarm Employment</u> (wage and salary workers)	<u>Clay County</u>	<u>Total</u>
Goods-Producing (Manufacturing & Natural Resources & Construction)	497	16,056
Trade, Transportation, Warehousing & Utilities	585	16,677
Information	(D)	(D)
Financial Activities	102	3,452
Professional & Business Services	(D)	(D)
Education & Health Services	282	(D)
Leisure & Hospitality	56	5,719
Other Services	44	(D)
Government	769	11,776
TOTAL NONFARM WAGE AND SALARY WORKERS	2,379	70,449
Farm Employment	642	6,134
TOTAL EMPLOYMENT	3,061	73,158
B. Commuting Out of County	1,148	
C. Unemployment	94	2,233
TOTAL LABOR FORCE	3,155	75,392
D. Estimated number of homemakers, seasonal and part-time workers, and workers who would shift from low-paying jobs who could be expected to work for industry.	60	
E. Estimated number of county high school graduates annually	100	
TOTAL POTENTIAL LABOR SUPPLY (B, C, D & E)	1,402	

(D) Data not available due to disclosure suppression.

Source: Nebraska Workforce Development U.S. Department of Commerce, Bureau of Economic Analysis (BEA), data for 2005 U.S. Census

Sutton is willing to conduct a labor survey for a prospective industry.

**NONFARM WAGE AND SALARY EMPLOYMENT
CLAY COUNTY
12-MONTH AVERAGE
OCTOBER 2007 TO SEPTEMBER 2008**



POPULATION DATA

Location	2000			2006	2007	
	Density/Sq. Mile	% High School Graduate or Higher	% Bachelor's Degree or Higher	% 65 Yrs. & Over	Median Age	County Median Family Income
Clay Co. Nebraska	12.3	86.7	16.2	18.2	44.7	\$47,800
U.S.	79.6	80.4	24.4	12.4	36.7	\$59,000

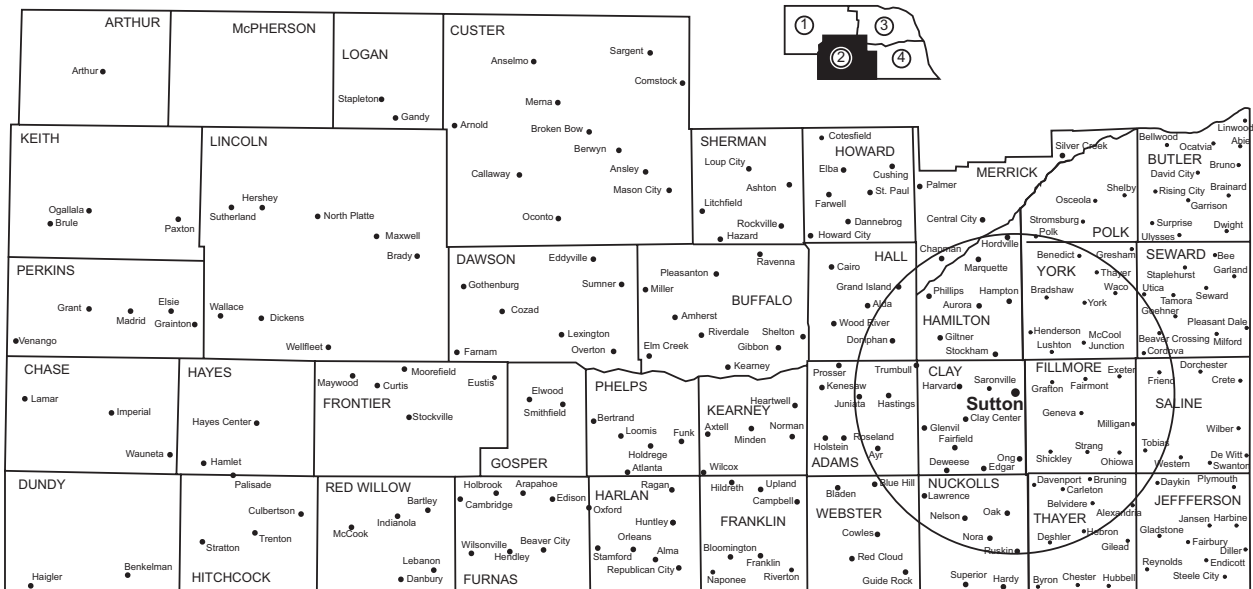
Clay County had 4,974 eligible voters in 2004; 68.5 percent voted in the national election compared to 68.3 percent in Nebraska.

Source: U.S. Census, www.census.gov

U.S. Department of Housing and Urban Development, 2007

Statewide General Election 2004 Results, www.sos.state.ne.us/elec/canvass/general2004/General2004

LABOR POTENTIAL IN THE SUTTON AREA



POPULATION DATA U.S. Census Estimates

2007 Estimate		
City of Sutton	—	1,326
Clay County	—	6,330
30-Mile Radius	—	76,934

Clay County Population Ages/Gender, 2007		
Ages	Male	Female
18-24	270	290
25-44	584	629
45-64	1,004	949

UNIONIZATION

Nebraska has a right to work provision in its constitution. In 2006, 7.9 percent of Nebraska's nonfarm wage and salary workers were members of labor unions compared to a national figure of 12.0 percent.

Labor organizations operating in the Sutton area:

<u>Company</u>	<u>Union</u>
BNSF Railway Company	Brotherhood of Maintenance of Way
SourceGas	Communications Workers of America
Sutton Public Schools	Nebraska State Education Association

It is estimated that less than 1 percent of the total nonagricultural labor force in Sutton is unionized. There have been no known strikes.

WAGES

Occupation Title	Hourly Wage (\$)/Percentile		
	10th	50th	90th
Professional			
Accountants & Auditors	17.32	24.23	42.04
Engineers			
Civil Engineers	16.03	27.26	41.87
Electrical Engineers	20.19	28.03	53.78
Industrial Engineers	21.18	30.39	39.76
Mechanical Engineers	21.90	31.61	42.38
Computer Programmers	13.97	21.94	33.37
Computer Systems Analysts	14.71	29.95	57.05
Registered Nurses	17.82	23.96	31.72
Retail			
Hotel, Motel & Resort Desk Clerks	6.17	8.34	10.30
Retail Salespersons	6.14	8.71	17.47
Truck Drivers-Light or Delivery Services	7.89	12.24	24.13
Driver/Sales Workers	6.00	9.27	21.63
Stock Clerks & Order Fillers	6.45	9.52	15.17
Shipping, Receiving & Traffic Clerks	10.07	13.74	18.78
Clerical			
Bookkeeping, Accounting & Auditing Clerks	8.52	12.75	18.21
Customer Service Representatives	7.67	12.02	18.56
Data Entry Keyers	8.38	10.85	14.79
Secretaries, excl. Legal, Medical & Executive	7.93	11.10	15.73
Office Clerks, General	6.45	9.71	14.97
Receptionists & Information Clerks	6.59	9.54	14.54
Telemarketers	6.66	9.71	16.03

Occupation Title	Hourly Wage (\$)/Percentile		
	10th	50th	90th
Unskilled			
Laborers & Freight, Stock & Material Movers, Hand	7.59	10.95	15.33
Packers & Packagers, Hand	6.05	9.15	14.10
Assemblers & Fabricators, All Other	9.98	11.76	15.60
Nursing Aides, Orderlies & Attendants	8.36	10.27	12.56
Semi-Skilled			
Industrial Truck & Tractor Operators	10.34	13.78	19.08
Truck Drivers, Heavy or Tractor-Trailer	10.08	16.80	27.82
Maintenance Workers, Machinery	10.56	16.27	21.15
Machine Operators			
Drilling & Boring Machine Tool Setters/Oper.	9.50	14.09	19.62
Milling & Planing Machine Setters/Oper.	10.55	14.14	18.69
Grinding, Lapping, Polishing & Buffing Mach. Oper.	9.54	11.51	14.68
Cutting & Slicing Machine Setters/Oper.	9.99	13.22	16.58
Cutting, Punching & Press Machine Setters/Oper.	9.44	13.54	18.84
Multiple Machine Tool Setters/Oper.	11.58	14.32	19.20
Skilled			
Automotive Service Technicians & Mechanics	9.38	15.04	25.72
Electricians	13.34	16.66	22.22
Industrial Machinery Mechanics	13.61	17.51	23.38
Machinists	10.48	13.78	18.45
Tool & Die Makers	13.58	20.07	28.55
Welders, Cutters, Solderers & Brazers	10.29	13.81	18.82
Welding, Soldering & Brazing Machine Setters	11.67	14.27	19.47
Technical			
Electrical & Electronic Engineering Technicians	14.34	24.37	32.72
Medical & Clinical Laboratory Technologists	17.25	23.53	31.54
Computer Operators	10.46	12.76	19.73

Source: Nebraska Workforce Development, Occupational Employment Statistics Program, Second Quarter 2008 wage estimates, All Industries, Central Region, www.dol.state.ne.us/Lmiwages/toc000.htm.

Production workers are, for the most part paid on a straight-time basis rather than an incentive basis.

FRINGE BENEFITS

Local industries estimate fringe benefits to range from 5 to 20 percent of wages.

TRANSPORTATION

RAILROADS

Sutton is served by a main line of the BNSF Railway Company. Switching is performed by train crews. There are 1,200 inbound cars (excluding through cars) and 1,200 outbound cars annually.

Amtrak provides Hastings, 29 miles west of Sutton, with rail passenger service east to Chicago and west to Denver and San Francisco/Oakland. The Superliner features a lounge car, coach and first-class accommodations, dining car services, and checked baggage service from most cities. Travel time is 13 1/2 hours to Chicago and 45 hours to the West Coast. Amtrak has one train each way daily.

MOTOR

Highways

Sutton is served by east-west U.S. Highway 6. There are no local load restrictions. U.S. Highway 81, 14 miles east of Sutton, is designated to be a four-lane expressway from Mexico to York; sections have been completed. Interstate 80 (east-west) is 18 miles north and Interstate 70 (east-west) is 120 miles south of Sutton.

Highway mileage to major cities:

Destination	Mileage
Lincoln	79
Omaha	132
Chicago	596
Dallas	591
Denver	440
Detroit	861
Kansas City	270
Los Angeles	1,369
Minneapolis	506
New York	1,369
St. Louis	520
San Francisco	1,571

Trucklines

More than 8,000 licensed motor carriers with worldwide connections are based in Nebraska and serve businesses throughout North America.

George Bros. Truck, Inc., with a terminal in Sutton, operates 28 trucks daily.

Bus Line

The nearest bus service is available in Hastings, 29 miles west of Sutton.

AIR

The Sutton Airport has a 1,400-foot gravel runway. There are five private planes hangared there; one is available for charter. The elevation at the airport is 1,725 feet, the latitude is 40°39'65"N and the longitude is 97°52'11"W.

Commercial air service is provided at the Central Nebraska Regional Airport near Grand Island, 54 miles (55 minutes) northwest of Sutton. Passenger, air freight, and air express services are provided and ground transportation is available.

Sutton residents also use the Lincoln Airport, 79 miles (80 minutes) northeast of Sutton.

WATER

Water transportation is not available in the Sutton area.



Railroad Tracks West of Sutton



Residential Homes

UTILITIES

ELECTRICITY

Sutton is provided wholesale electric service by Nebraska Public Power District (NPPD). Two 115,000 volt lines deliver power to a substation three miles southwest of the city. At the delivery point, a 7.5 MVA, 115/69/34.5 kV transformer steps down the voltage to 34,500 volts for delivery to the city. The city-owned distribution system is 4,160 volts grounded wye with a substation capacity of 5,000 kVA.

BASE ELECTRIC RATES: (effective 3/11/08)

Summer bills run from June–September.
Winter bills run from October-May.

Residential Service:

Customer Charge: \$7.50 per month		
Summer	Winter	
13.802¢	13.471¢	per kWh for the first 150 kWh used per month
12.492¢	7.400¢	per kWh for the next 500 kWh used per month
7.509¢	5.715¢	per kWh for the next 850 kWh used per month
7.224¢	4.969¢	per kWh for all additional kWh used per month
Minimum Bill: The Customer Charge		

This rate is subject to application of Retail Production Cost Adjustment (PCA).

Residential Service – All Electric:

Customer Charge: \$7.50 per month		
Summer	Winter	
13.802¢	13.470¢	per kWh for the first 150 kWh used per month
12.492¢	7.398¢	per kWh for the next 500 kWh used per month
7.509¢	5.301¢	per kWh for the next 850 kWh used per month
7.224¢	4.418¢	per kWh for all additional kWh used per month
Minimum Bill: The Customer Charge		

This rate is subject to application of Retail Production Cost Adjustment (PCA).

Commercial Service – Single Phase:

Customer Charge: \$10.00 per month		
Summer	Winter	
15.105¢	13.913¢	per kWh for the first 250 kWh used per month
9.275¢	8.834¢	per kWh for the next 750 kWh used per month
8.065¢	7.840¢	per kWh for the next 1,000 kWh used per month
7.509¢	6.957¢	per kWh for all additional kWh used per month
Minimum Bill: The Customer Charge		

This rate is subject to application of Retail Production Cost Adjustment (PCA).

Commercial Single Phase - All Electric:

Customer Charge: \$10.00 per month		
Summer	Winter	
14.022¢	13.913¢	per kWh for the first 250 kWh used per month
9.275¢	8.834¢	per kWh for the next 750 kWh used per month
8.061¢	7.840¢	per kWh for the next 1,000 kWh used per month
7.512¢	6.626¢	per kWh for all additional kWh used per month
Minimum Bill: The Customer Charge, subject to applicable Base Rate adjustments		

This rate is subject to application of Retail Production Cost Adjustment (PCA).

Commercial – Three Phase (Non-Demand):

Customer Charge: \$15.00 per month		
Summer	Winter	
14.354¢	14.022¢	per kWh for the first 250 kWh used per month
9.496¢	8.834¢	per kWh for the next 750 kWh used per month
8.392¢	7.840¢	per kWh for the next 1,000 kWh used per month
7.729¢	7.178¢	per kWh for all additional kWh used per month
Minimum Bill: The Customer Charge		

This rate is subject to application of Retail Production Cost Adjustment (PCA).

Commercial Three Phase - All Electric (Non- Demand):

Customer Charge: \$15.00 per month		
Summer	Winter	
14.354¢	14.022¢	per kWh for the first 250 kWh used per month
9.496¢	8.834¢	per kWh for the next 750 kWh used per month
8.392¢	7.840¢	per kWh for the next 1,000 kWh used per month
7.729¢	6.957¢	per kWh for all additional kWh used per month
Minimum Bill: The Customer Charge		

This rate is subject to application of Retail Production Cost Adjustment (PCA).

Commercial – Large (Demand):

Demand Charges:		
Summer	Winter	
\$15.89875	\$8.94313	per KW
Energy Charges:		
Summer	Winter	
3.313¢	2.210¢	per kWh
Minimum Bill: \$250.00 per month		

This rate is subject to application of Retail Production Cost Adjustment (PCA).

Prospective customers should contact the Sutton City Hall, (402) 773-5607, for further information regarding electric rates and service.

The South Central Public Power District, a wholesale power customer of Nebraska Public Power District, serves the rural area surrounding Sutton. For more information regarding electrical services in the South Central Public Power District service area, contact Max VanSkiver, Nelson, Nebraska, (402) 225-2351, www.southcentralppd.com.

NATURAL GAS

Natural gas is supplied to Sutton by SourceGas Distribution, LLC, through a four-inch transmission pipeline with an operating pressure of approximately 450 pounds per square inch.

SourceGas is the retail distributor of natural gas within the community, serving approximately 660 residential, commercial, and industrial customers. Choice Gas is available to natural gas customers in Sutton.

Natural gas is available for residential and commercial uses. Availability of natural gas for industrial uses is subject to individual situations. As specific requirements of an industrial prospect become available, information on gas service availability and applicable rates can be obtained from SourceGas's Service Center at (800) 563-0012.

OTHER FUELS

LP Gas

LP gas is available for residential, commercial, and industrial uses in Sutton at George Bros. Propane and CPI.

Oil

Oil is available in Sutton for residential, commercial, and industrial uses from George Bros. Propane and CPI.

WATER

The municipal water system in Sutton is supplied by three wells, which have an average depth of 165 feet. The system, serving 100 percent of the city population, has a combined pumping capacity of 1,700 gallons per minute. The overhead storage capacity is 350,000 gallons. The average daily demand is 1,200,000 gallons, and the historic peak daily demand is 1,700,000 gallons. The system has a maximum capacity of 2,798,000 gallons per day. The static pressure is 65 pounds per square inch and the residual pressure is 55 pounds per square inch.

Groundwater is available for industrial uses. A 180-foot deep well provides between 1,500 to

1,800 gallons of water per minute. The water table has declined approximate five feet during the past five years. The quality of the water in Sutton does not necessitate a water treatment plant.

The color of the water is clear and the hardness, in parts per million, is 245. The turbidity is .3 Nephelometric turbidity units (NTU). The average tap water temperature is 58° year round.

Chemical Analysis (parts per million)

Hydrogen Ion Concentration	7.2
Calcium	75
Total Solids	301
Magnesium	12
Iron	.13
Nitrate	1.6–3.6
Manganese	.02
Chloride	11
Fluoride	0.3
Sulfate	39
Total Alkalinity	238
Sodium	25
Total Hardness	245
Potassium	5.4

WATER RATES (effective 4/10/07)

Residential & Commercial:

\$19.00 per month

Residential Rural & Commercial Rural:

\$22.00 per month

Improvements to the water system in the last three years included the addition of 15,000 feet of 12-inch transmission lines at a cost of \$650,000, funded by General Obligation Bonds.

SEWERAGE

Sutton has a municipal sanitary sewerage system and a storm sewer system. A four-lagoon non-discharge system was built in 2001 and has a daily capacity of 300,000 gallons, an average daily flow of 110,000 gallons, and a historic peak daily discharge of 150,000 gallons.

SEWER-USE CHARGES (effective 4/10/07)

Residential & Commercial:

\$26.00 per month

Residential Rural & Commercial Rural:

\$29.00 per month

Recent capital improvements to the city sewerage system included adding 1,500 feet of 8-inch main at a cost of \$62,000, funded by cash and bonds.

SOLID WASTE DISPOSAL

Solid waste collection in Sutton is contracted.

SOLID WASTE REMOVAL RATES
(effective 4/10/07)

Residential:

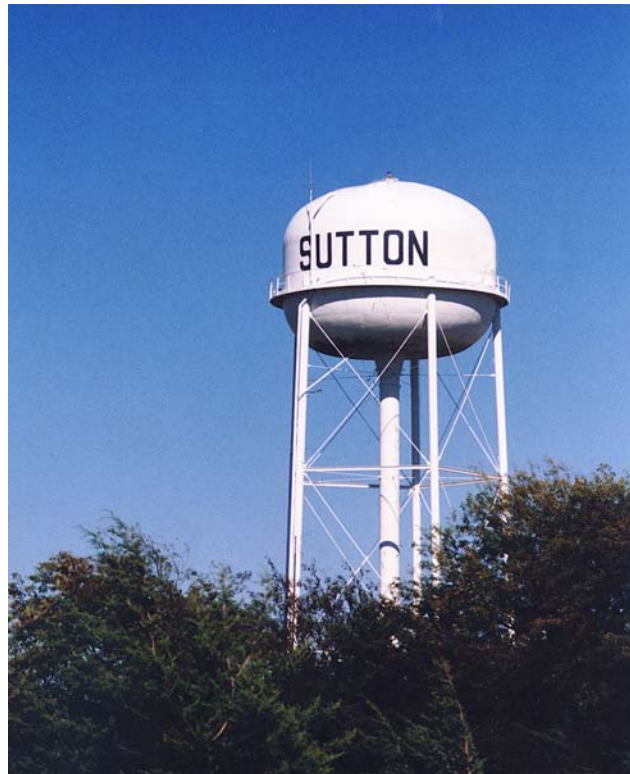
\$10.00 per month

Commercial:

Varies from \$25.00 to \$60.00 per month, depending on usage

RECYCLING

The Sutton Girls Scouts recycle aluminum cans and the Sutton Boy Scouts recycle newspapers the first Saturday of the month. The city of Sutton has concrete and asphalt recycling as well as compost.



Sutton's Water Tower

COMMUNICATIONS

TELECOMMUNICATIONS

Windstream, with a digital central office served by fiber, employs ten miles of T-1 lines. Installation and maintenance personnel are located in Hastings, 30 miles. Sutton is an equal access community.

Windstream provides a wide range of products and services including traffic studies, long distance comparisons, 800 service, telephone systems, call accounting systems, data services, and high capacity digital services.

Cellular telephone service is provide in Sutton by Alltel, US Cellular, and Viera Wireless.

INTERNET

Local Internet access in Sutton is provided by:

Company	
Galaxy Cable www.galaxycable.com	(800) 365-6988
Mainstay Communications www.mainstaycomm.net	(888) 968-6008
Windstream www.windstream.com	(877) 807-WIND

POST OFFICE

The post office in Sutton contracts with the Saronville Post Office, which has one mail receipt and one mail dispatch daily.

Postal receipts for the past five fiscal years:

Year	Receipts
2007	\$278,254
2006	\$260,506
2005	\$265,899
2004	\$263,939
2003	\$265,920

PACKAGE DELIVERY SERVICES

Overnight express service availability:

	Federal Express	Pony Express	UPS	U.S. Postal Service
Latest Pick-up Time	12:00 p.m.	12:00 p.m.	3:00 p.m.	3:00 p.m.
Earliest Delivery	8:00 a.m.	10:00 a.m.	8:00 a.m.	12:00 p.m.
Next Day Delivery Guarantee	No	No	Yes	No
Saturday Delivery Guarantee	No	No	Yes	No

NEWSPAPER

The Clay County News, with 2,500 subscribers, is the local weekly newspaper. Daily papers delivered locally are the Omaha World-Herald, Lincoln Journal Star, the Hastings Daily Tribune, and the Grand Island Independent.

RADIO

Radio stations which carry local news include:

Call Letters	Frequency	Location
KHAS-AM	1230 KHz	Hastings
KEZH/KICS-FM	101.5 MHz	Hastings
KICS-AM	1550 KHz	Hastings
KAWL-AM	1370 KHz	York
KRGI-FM	1430 MHz	Grand Island

TELEVISION

Television stations carrying local news:

Call Letters	Channel	Location
KHAS	5	Hastings
KOLN/KGIN	10/11	Lincoln/Grand Island
KHGI	13	Kearney

Cable television service is available on 96 basic and digital channels, 32 premium channels, and other various channels from Galaxy Cablevision.

Satellite service is available in Sutton from Dish Network and DirecTV.



U.S. Post Office



Clay County News

TAX STRUCTURE

VALUES FOR TAX LEVY PURPOSES—CITY OF SUTTON

All real property is subject to tax at market value. Agricultural land is valued at 80 percent of its actual value. Personal property that is used in a trade or business and is depreciable is subject to tax at its “net book value.” All other personal property is exempt from taxation.

	Actual Valuation		
	2005	2006	2007
Real Estate	\$50,467,170	\$51,214,880	\$52,558,525
Personal Property	2,709,531	3,194,705	4,084,386
Special (railroad and utilities)	1,090,508	1,133,465	1,128,287
TOTAL	<u>\$54,267,209</u>	<u>\$55,543,050</u>	<u>\$57,771,198</u>

TAX RATE (Dollars and cents per \$100 of actual value)

	2005	2006	2007
Sutton Township*	\$0.0101	\$0.0089	\$0.0091
City	.8303	.9803	.9800
County	.2931	.2924	.3152
School District	1.1325	1.1814	1.1849
Community College	.0830	.0817	.0801
Educational Service Unit	.0154	.0154	.0154
Natural Resource District	.0383	.0368	.0334
Agricultural Society	.0109	.0113	.0115
TOTAL	<u>\$2.4136</u>	<u>\$2.6082</u>	<u>\$2.6296</u>
School Creek Township*	.0090	.0101	.0103
TOTAL	<u>\$2.4125</u>	<u>\$2.6094</u>	<u>\$2.6308</u>

*The city of Sutton is located in two townships (Sutton and School Creek). Both township levies and total levies for each township are provided.

CITY SALES TAX

The city of Sutton imposes a 1.5 percent city sales tax.

LOCAL BONDED INDEBTEDNESS

As of January 1, 2008:

City—Sales Tax Revenue Bonds	\$1,260,000
City—General Obligation Bonds	\$630,000
School District	None
County	None

CITY BOND ISSUES

Type	Date Issued	Original Amount	Unpaid Balance As of 1/01/08	Interest Rate (%)	Date Due
Revenue					
Sanitary Sewer Bond	11/15/03	\$170,000	\$140,000	2.9	2015
Sales Tax Refunding	4/19/05	\$1,385,000	\$1,120,000	3.35-4.3	2015
General Obligation					
GO Water Bond	4/15/07	\$650,000	\$630,000	3.9	2020



Sutton Community Senior Center



Sutton Volunteer Fire Department

LOCAL GOVERNMENT

COUNTY GOVERNMENT

Clay County has 16 townships and is governed by five county commissioners, who are elected by popular vote for four-year terms. The next election will be held in 2008. The actual county budget for 2007–08 is \$2,342,560.

Zoning classifications are:

- General Agricultural
- Agricultural Industrial
- Residential
- Highway Commercial
- Industrial

MUNICIPAL GOVERNMENT

Sutton, a second-class city, has a mayor-council form of government. The 2007–08 actual budget is \$2,975,626. The next election will be held in November 2008. Municipal officials are:

Title	Term of Office
Elected at Large	
Mayor	4 Years
Council Members (4)	4 Years
Appointed	
City Administrator	1 Year
City Attorney	1 Year
City Clerk/Treasurer	1 Year

FIRE PROTECTION

Fire protection is provided to the city and the rural areas by a 45-member volunteer fire department; 13 members are EMT certified. The department also provides protection to areas outside the city limits on an agreement with the Rural Fire Protection District.

There are 130 fire hydrants in Sutton. The fire insurance classification inside the corporate limits is 5; outside it is 8, 9, or 10. Annual expenditures for fire protection during the past three years averaged \$30,000.

Equipment in the city/rural fire department:

Year/Make	Description
2002 Freightliner	1,000 gal. tanker
1991 Ford	Equipment truck
1984 Chevrolet FMC	1,000 gal. per min.
1982 Ford	Rescue truck
1980 International	2,000 gal. tanker
1976 GMC	1,400 gal. tanker
1996 Ford	Ambulance
1987 Ford	Ambulance

LAW ENFORCEMENT

Police Department

The police department in Sutton is staffed by two full-time policemen. The department has standard equipment. Annual expenditures for police protection for the last five years averaged \$124,517.

Sheriff's Department

The Clay County Sheriff's Department is staffed by five personnel. Regular patrol by the police and sheriff's department provides protection to existing industries.

Crime rates per 1,000 population, 2006:

Location	Violent Crimes	Property Crimes
Sutton	0	0.71
Clay County	0	0.15
Nebraska	2.8	33.4
U.S.	4.7	34.3

State Patrol

Troop C of the Nebraska State Patrol is headquartered in Grand Island, 54 miles northwest of Sutton.

STREETS

Sutton has 22 miles of streets, 18 miles are hard-surfaced with concrete or asphalt. Load

restrictions apply to bridges only. Seventy-five percent of the streets have curbs and 60 percent have sidewalks.

Street maintenance include street sweeping, snow removal, crack filling, patching, and joint repair.

Contemplated improvements in the next five years include concrete paving of one-half mile of street at a cost of \$350,000 to be funded by bonds.

BUILDING AND ZONING REGULATIONS

Building codes in Sutton conform to Adopted National Construction Codes.

Local zoning classifications are:

- Industrial
- Ag Industrial
- Residential
- Commercial
- Highway Commercial

PLANNING

Sutton has a five-member planning commission who serve three-year terms.

The Comprehensive Plan for Sutton was prepared by the Sutton Planning Commission in 1994. A revision is planned for 2010.



Clark's Pond

COMMUNITY FACILITIES

SCHOOLS AND COLLEGES

Sutton School System

Type of School	Classrooms	Students	Teacher/ Pupil Ratio	Computer/ Pupil Ratio
Elementary	13	193	1 : 15	1 : 4
Elementary*	4	54	1 : 10	N/A
Jr.-Sr. High School	23	204	1 : 10	1 : 4
Jr. High School*	1	7	1 : 7	N/A

*Nondenominational

Clay County School District No. 2 covers approximately 188 square miles and has a 2006–07 actual valuation of \$261,082,176, with an actual valuation per pupil of \$670,683. This Class 3, Type K-6-6 district is accredited by the state of Nebraska and North Central Association.

The 2006–07 school operating budget totaled \$4,314,578 with an average cost per pupil of \$10,173.

The elementary school, built in 1979, has a maximum capacity of 300. The junior-senior school was built in 1963 and also has a maximum capacity of 300.

Test Results

Eight Grade Terra Nova	% Proficiency
Writing	96.88
Math	90.63
Reading	97.50
Composite	
ACT	21.7

The Sutton High School class of 2007 had a 100 percent graduation. Ninety-six percent of the graduating seniors pursued a college degree, and four percent of the seniors entered the job market or military.

Vocational/tech prep programs offered include Business, Family Consumer Science, Industrial Arts, and Agriculture.

The school system provides facilities for preschool activities for Learning Language Skills (BEES).

The Sutton Preschool also offers preschool services for children aged 3 1/2–5 years of age. Head Start also provides services to the area.

The Sutton Christian School is tuition based. Tuition varies from one year to the next. For more information on this non-denominational school call the York city office at (402) 363-2600.

Educational Service Unit

Educational Service Unit 9 (ESU), headquartered in Hastings, serves six counties including Clay. Services provided include staff development, special education, media, and Chapter 1.

Community College

Sutton is part of the Central Community College which encompasses a 25-county area. The college is governed by an 11-member Board of Governors elected by the citizens of the counties served. Administrative offices are located in Grand Island with campuses in Hastings, Columbus, and Grand Island and off-campus centers in Holdrege, Lexington, and Kearney. Classes are available through extended learning programs in approximately 80 communities within the college's service area. During the 2006–07 academic year, 25,400 students were enrolled in Central Community College courses.

Certificate, Diploma, and Degree Programs:

Central Community College offers 33 career and technical education programs, including more than 700 vocational technical and academic transfer college credit courses. Classes are offered by multiple delivery methods, including

traditional lecture/lab class settings. Some of the alternative delivery methods used include:

—**Independent Study:** Allows students to work on college credit classes at their own pace, using course materials from the campuses. The staff serve as contacts between the student and campus faculty and administration.

—**Distance Learning:** Uses several state-of-the-art teaching technologies, including video conferencing, satellite broadcasts, and Internet courses to deliver college credit courses.

Adult Basic Education Program: This program is offered by Central Community College in cooperation with the Nebraska Department of Education and the federal government. The program is designed to provide the opportunity to gain basic education skills at no cost to the student. The program has four major components:

—Adult Basic Education for those with less than an eighth grade education.

—English as a Second Language for non-English speaking persons wishing to learn to speak, read, and write English.

—High School Completion (General Educational Development—GED) for those with less than a high school diploma.

—Living Skills for adults wishing to improve their basic life skills in consumer economics, health, community resources, government and law, and occupational knowledge.

Community Education Program: Avocational/recreational courses are offered to provide students an opportunity to explore and develop skills for personal interest, leisure, and recreational activities.

Business and Professional Training: Central Community College is a primary source of training and education for business, industry, agricultural association, civic groups, governmental agencies, and other organizations within its 25-county service area. College staff provide expertise in their fields of study to develop and coordinate specially-tailored short courses, workshops, and seminars to meet specific training needs.

Central Community College works with area industries, retail establishments, and other agencies and organizations in delivering various training programs.

Central Community College offers 33 career and technical education programs with a focus on degree, diploma, and certificate programs requiring two years or less to complete. The college also offers an academic transfer program for students who want to complete the first two years of a bachelors degree before transferring to a four-year college or university. In addition, the college offers classes in communities throughout its 25-county service area, online learning, and training and development for businesses, industries, and other organizations.

For more information on Central Community College, visit www.cccneb.edu.

Central Community College			
2006–07 Academic Year			
(Note: Numbers can be duplicated between award levels)			
Program	Degree	Diploma	Certificate
Academic Transfer	104	NA	NA
Agriculture	5	5	3
Associate Degree in Nursing	58	NA	NA
Auto Body Technology	6	3	97
Automotive Technology	6	6	14
Business Administration/Accounting	62	31	51
Commercial Art	5	5	11
Commercial Horticulture	8	6	17
Construction Technology	17	18	24

NA-Not available



Sutton Public Schools



Sutton High School Football Field



Sutton Christian School



Sutton Community Home



Sutton Family Medical Clinic



Sutton Pharmacy

**Central Community College
2006–07 Academic Year**

(Note: Numbers can be duplicated between award levels)

Program	Degree	Diploma	Certificate
Criminal Justice	4	0	0
Dental Assisting	14	11	NA
Dental Hygiene	14	NA	NA
Diesel Technology	6	5	0
Drafting	24	12	23
Electrical Technology	16	NA	2
Electronics Technology	14	7	8
Early Childhood Education	27	11	23
Health Information Management Services	9	27	11
Heating, Air Conditioning & Refrigeration	6	3	0
Hospitality Management & Culinary Arts	8	NA	2
Human Services	23	10	NA
Industrial Technology	8	6	6
Information Technology	8	17	23
Machine Shop Technology	2	3	14
Media Arts	9	12	30
Medical Assisting	16	NA	14
Medical Technology	12	NA	NA
Office Technology	28	47	46
Paralegal	4	4	5
Parts Sales & Management	3	3	3
Practical Nursing	NA	63	NA
Quality Control	2	NA	9
Welding Technology	6	6	12

NA-Not available

Colleges and Universities

Hastings College, 29 miles west of Sutton, is a private, undergraduate, four-year, residential liberal arts college. The college was founded in 1882, in Hastings, Nebraska, by a group of men and women seeking to establish a presbyterian-related college dedicated to high academic and cultural standards—traits that still apply more than 125 years later.

Throughout its history, Hastings College has occupied a distinguished place among liberal arts colleges in the Midwest. The student body of approximately 1,150 represents 23 states and 8 foreign countries.

The college offers 64 majors in 32 areas of study and 12 pre-professional programs. Personalized programs are also designed for students wanting to tailor a course of study or study abroad. The college confers bachelor of arts, bachelor of music, and master of arts in teaching degrees.

More than 70 organizations on campus allow students ample opportunity for involvement. Organizations include student government, honorary fraternities, Greek societies, and other special interest and departmental organizations. A member of the National Association of Intercollegiate Athletics, students compete in 16 intercollegiate sports.

The Hastings College campus is situated on 109 beautifully landscaped areas. Within that space sit 40 buildings spanning from the traditional McCormick Hall, built in 1883, to the Osborne Family Sports Complex/Fleharty Educational Center, built in 2002. Bronco Village Apartments for juniors and seniors was completed in 2006. An outdoor track complex was finished in 2007, and the state-of-the-art Morrison-Reeves Science Center is scheduled to open in 2009.

Hastings College is named in the 2008 edition of America's Best Value Colleges published by *The Princeton Review*, ranked among top liberal arts colleges in the nation by *U.S. News & World Report*, *America's Best Colleges 2008*, and named a 2008 "Best College in the Midwestern Region" by the *The Princeton Review*. Hastings college is also recognized among the top liberal arts colleges in America by *The Washington Monthly* and has been named a "Best Buy in College Education" by *Barron's*.

Graduates by Major, 2006-07	
Major	Number of Graduates
Accounting	7
Art	6
Biology	27
Business	47
Chemistry	5
Communications	5
Computer Science	1
Economics	5
English	7
German	2
History	10
International Studies	6
Marketing	10
Mathematics	4
Media Production	17
Music	15
Philosophy	1
Physical Education	36

Graduates by Major, 2006-07

Major	Number of Graduates
Physics	6
Political Science	12
Psychology	48
Religion	5
Sociology	18
Spanish	1
Teacher Education	41
Theatre	7

For further information on Hastings College, visit www.hastings.edu.

Other Schools

Colleges, universities, and community colleges frequently attended by Sutton High School graduates include:

Community/ College or University	Mileage
Hastings Central Community College, Hastings Campus Hastings College Mary Lanning School of Nursing	29
York York College	31
Crete Doane College	49
Milford Southeast Community College	60
Seward Concordia University	60
Lincoln University of Nebraska-Lincoln Wesleyan University	79
Kearney University of Nebraska at Kearney	86
Omaha University of Nebraska at Omaha	132

CHURCHES

Denomination	Number of Churches
Baptist	1
Catholic	1
Christian	1
Federated	1
Lutheran, ELCA	1
Lutheran, Missouri Synod	1
Reformed	2
United Methodist	1

HEALTH CARE

There are approximately 200 physicians and 30 outpatient clinics within 50 miles of Sutton.

Clinics

The **Sutton Family Practice** was established in 2005. It is open five days a week with two doctors and one physician assistant. A full range of services are offered in Sutton for clinic visits including lab. All other ancillary services, surgery, emergency room, and hospitalization can be performed at the Henderson Health Care Services, Inc. On-call service is always provided.

The **Sutton Family Medical Clinic** is staffed by one full-time physician, two part-time physicians, and one advanced registered nurse practitioner through Mary Lanning Hospital in Hastings, 29 miles west of Sutton. The clinic also houses a dental office.

Rescue Squad

There are 13 Emergency Medical Technicians on the Sutton Volunteer Fire Department and Rural Fire District who operate the department's two ambulances.

Hospital

Nearby hospitals include the 163-bed **Mary Lanning Hospital** in Hastings, 29 miles west of Sutton; 33-bed **Fillmore County Hospital** in Geneva, 22 miles southeast; the 25-bed **Aurora Memorial Hospital** in Aurora, 28 miles north; and the 13-bed **Henderson Hospital** in Henderson, 16 miles north of Sutton.

NURSING HOMES

Sutton Community Home is a 32-bed Medicaid certified facility with private and semi-private rooms. The home provides 24-hour licensed nursing coverage, restorative therapy, and daily activities and serves therapeutic diets. Transportation is available and meals are delivered to homes in the community.

LIBRARY

The **Sutton Public Library** contains 17,417 volumes and has an average annual circulation of 15,000.

Library activities include a summer reading program and story hour. Internet access is available to the public.

RECREATION

There are four parks in Sutton covering approximately 40 acres. Facilities include a swimming pool; baseball, softball, and football fields; and tennis and volleyball courts.

Four playgrounds in Sutton have swings, slides, and other playground equipment. Programs include T-ball, baseball, softball, and horseshoes.

Area facilities:

- Boating — Excellent boating facilities at Lovewell Dam, 50 miles; Harlan County Reservoir, 100 miles; and Johnson Lake, 138 miles
- Bowling — One bowling alley with six lanes
- Car Racing — McCool Junction dirt track, 23 miles
- Fishing — Excellent fishing in farm ponds; Little Blue River, 18 miles; Platte River, 35 miles; Harlan County Reservoir, 100 miles; and other streams and ponds in the area

Golf Courses	— One public 9-hole grass greens course with clubhouse
Hiking/Biking Trail	— 0.75 mile trail
Hunting	— Excellent hunting for duck, pheasant, deer, quail, and rabbit
Swimming	— Outdoor pool in the park
Tennis	— Two tennis courts
Theaters	— Geneva, 22 miles; Aurora, 28 miles; Hastings, 29 miles; and York, 31 miles

Annual celebrations include the Sutton Area Showcase in February, Alumni Reunion in May, Sutton Dug Out Days in June, and Christmas Parade of Lights in December.

Activities available at the senior center include card playing, nail clinics, and potluck meals. The community/senior center is available for meetings and social gatherings.

Cultural activities such as ballets and concerts are scheduled by the Arts Council several times a year.

HOUSING

New Construction

Five new homes were constructed in the past two years and it is estimated two will be built in 2008. The cost of new home construction averages \$95 per square foot. Building permits were issued for 17 single-family homes during the last five years:

Housing Market (as of 4/08):

Number of Homes on the Market

Single Family - 8

Avg. Selling Prices (New and Existing)

Single Family Home	
2,500 sq. ft. - 3 bedroom	\$85,000
1,600 sq. ft. - 3 bedroom	\$65,000
1,000 sq. ft.	\$45,000

Number of Single Family Homes for Sale by Price (New and Existing)

Less than \$100,000	5
\$100,001–\$150,000	2
\$150,001–\$200,000	1

Rentals

Apartment - 2 bedroom	\$450
Apartment Vacancy Rate	15%

Low Cost and/or Retirement Housing

The **Carl H. Nolde Community Center** has 20 units for the low/to moderate-income elderly. The center consists of five buildings with four units each. Office and laundry facilities are located in the center building, which also has a social room.

Phase III of the **Nolde Community Center** has four units for the elderly. These larger units include a garage and storage unit and do not require low income guidelines.

Horseshoe Bend Villas consists of 10 duplex units with an attached garage. Construction of these housing units was completed in 2006. Rental of eight units is based on income, two are market rate.

Pleasant Hill Apartments, funded by the Department of Housing and Urban Development, has eight units with rent based on income.

The **Heritage Place of Sutton L.P.**, with eight 2-bedroom units, was built in 1994, and is income limited. Each apartment is furnished with a stove, refrigerator, washer, and dryer.

Assisted Living

Hillcrest View Assisted Living provides 16 assisted living units with studio and one-bedroom designs. Activity programs, meals and snacks, and health monitoring are provided as well as 24-hour urgency call to each room and 24-hour staff assistance. Transportation is available for residents.

FINANCIAL

As of December 2007

Name	Capital		
	Accounts	Deposits	Loans
<i>----- thousand dollars -----</i>			
Cornerstone Bank	\$56,000	\$641,000	\$453,000
Sutton State Bank	\$2,302	\$19,536	\$20,188



Cornerstone Bank (drive-up inset)



Sutton State Bank



Sutton Aquatic Facility



Fox Hollow Golf Course & Clubhouse

COMMUNITY SERVICES

PROFESSIONAL

Attorneys.....	5
Auctioneers	1
Chiropractors.....	1
Dentists	1
Medical Doctors (residing in Sutton) —general practitioners	2
Message Therapists	1
Nurse Practitioners.....	1
Nurses, Registered	10
Optometrists.....	1
Pharmacists	1
Physical Therapists	1
Physician Assistant.....	2
Veterinarians	10

BUSINESS AND COMMERCIAL

Accounting/Bookkeeping Agencies.....	3
Aerial Spray Service	2
Agricultural Implement Dealers	1
Apparel Stores—combination.....	1
Auto Supply Parts	2
Automobile Dealers & Repair Garages	3
Beauty Salons.....	5
Bowling Alleys.....	1
Carpet & Paint/Wall Paper Stores.....	2
Clubs/Lounges	4
Computer Stores.....	1
Construction Services & Facilities.....	3
Contractors—general	3
Convenience Stores.....	2
Day Care, Licensed.....	4
Dry Cleaning & Laundries.....	1
Drug Stores	1
Electric Motor Repair	1
Feed & Seed Stores.....	4
Fitness Centers	1
Floral Shops	1
Funeral Homes.....	2
Grocery Stores & Meat Markets	1
Hardware Stores.....	1
Insurance Agencies	
Livestock Buying Stations	1
Livestock Commission Companies.....	1
Lumberyards	1
Machine Shops.....	1

Motels	2 (23 units)
Newspapers	1
Office Supplies.....	1
Preschools	2
Real Estate Agencies.....	1
Repair Shops	3
Restaurants.....	3
Service Stations.....	3
Specialized Shops	4
Tire Stores.....	1
Variety Stores	3
Welding Equipment Shops.....	1



Carl H. Nolde Community Center



Hillcrest View Assisted Living



Heritage Place of Sutton

AGRICULTURE & RAW MATERIALS

AGRICULTURE

2002 Statistics	Clay County	State of Nebraska
Number of Farms	503	49,355
Land in Farms (acres)	373,994	45,903,116
Average Size of Farms (acres)	744	930
Market Value of Agricultural Products Sold	\$159,642,000	\$9,703,657,000
Market Value Per Farm	\$317,380	\$196,609
Total Acres Irrigated	201,394	7,625,170
Percent of Farmland Irrigated	53.8%	16.6%
Five-Year Average Production of Leading Crops (2003–2007)		
All Wheat	404,900 bu.	71,778,000 bu.
Corn for Grain	24,737,860 bu.	1,272,880,000 bu.
Hay Alfalfa	31,630 ton	4,546,200 ton
Sorghum For Grain	665,300 bu.	25,568,000 bu.
Soybeans	4,641,060 bu.	215,393,000 bu.
Five-Year Average Livestock Population (2004–2008)		
All Cattle	57,800	6,470,000

Source: National Agricultural Statistics Service, 2003–2008
2002 Census of Agriculture

RAW MATERIALS

There are no metallic minerals in the area. Nonmetallic minerals of sand, gravel, and rock are available in commercial quantities.

ROMAN L. HRUSKA U.S. MEAT ANIMAL RESEARCH CENTER

Scientists at the Roman L. Hruska U.S. Meat Animal Research Center (MARC) develop new technology for the meat animal industries to increase efficiency of production of high-quality red meat, thereby benefiting the customer as well as the producer of livestock products. The center, authorized by Congress on June 16, 1964, is a unique facility that makes major contributions towards solving problems facing the U.S. livestock industry. Development of the 35,000 acre facility began in 1966. Current research program objectives require female breeding populations of approximately 7,200 cattle, representing 18 breeds; 4,200 sheep, representing 10 breeds; and 600 swine litters per year, representing 5 breeds. Experimental feedlots for cattle and sheep and facilities for breeding herds and flocks are essential components for the comprehensive research program. Organized on a multi-disciplinary basis, the U.S. livestock

industry by extending investigations into areas not adequately studied at present. Research programs include: 1) genetics and breeding, 2) reproduction, 3) nutrition, 4) animal health, 5) meats science, 6) production systems, and 7) biological engineering.

MARC is administered by the Agricultural Research Service within the U.S. Department of Agriculture (USDA). The research program complements research conducted elsewhere by USDA and is cooperative with the University of Nebraska and other land grant universities throughout the country. On October 10, 1978, President Carter signed into law a bill renaming the U.S. Meat Animal Research Center to the Roman L. Hruska U.S. Meat Animal Research Center. The purpose of the bill was to honor former Senator Roman L. Hruska from Nebraska for "his efforts in the establishment of a centralized federal facility for the research, development, and study of meat animal production in the United States."

CLIMATE

TEMPERATURE, PRECIPITATION, AND HUMIDITY

Month	AVERAGES						
	Temperature			Precipitation		Humidity*	
	Min.	Mean	Max.	Rain (Inches)	Snow (Inches)	Morning	Afternoon
January	12.4	23.0	34.1	.38	4.7	77	65
February	16.9	28.1	39.3	.53	4.3	78	63
March	26.2	38.4	50.5	1.73	3.9	79	59
April	36.9	49.8	62.6	2.92	.9	79	53
May	48.1	60.2	72.3	4.81	0	82	56
June	58.1	70.4	82.7	3.73	0	82	54
July	62.9	75.3	87.7	3.93	0	84	57
August	60.7	73.1	85.6	3.08	0	86	58
September	51.0	64.5	78.1	2.70	0	84	55
October	38.4	51.9	65.5	2.02	.3	79	51
November	26.0	37.7	49.2	1.39	2.5	80	60
December	16.4	27.1	37.7	.60	4.0	79	65
Annual	37.8	49.9	62.1	27.83	20.6	81	58

*Recorded at Grand Island Weather Station

FROST DATA

Average date of spring freeze probability.....	April 28
Average date of fall freeze probability.....	October 5
Average length of freeze free season probability.....	164 days
Average number of heating degree days based on 65° Fahrenheit.....	6,393
Average number of cooling degree days based on 65° Fahrenheit.....	934
Wind speed in miles per hour (annual average).....	12
Prevailing wind direction (annual average).....	South

Source: High Plains Regional Climate Center, University of Nebraska, 1971–2007, www.hprcc.unl.edu



School Creek Estates



Horseshoe Bend Villas



Horseshoe Bend Subdivision and Hike/Bike Trail